



REMOTE → COUNTERS

# Lhotse LDLH-47 1250

GCL | BCA



**Module:**

1250



**Refrigerant:**

R744



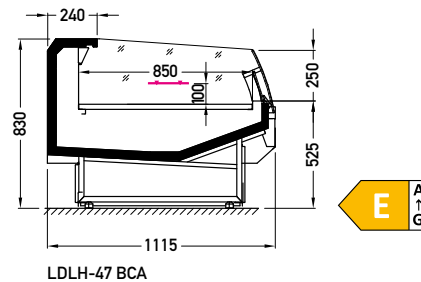
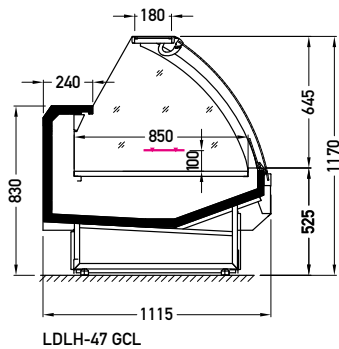
**Available options:**

- working temperature – straight module: from 0°C to 2°C; corner nodules from 4°C to 8°C
- electrical defrosting
- mechanical expansion valve for HFC; for R744 units electronic expansion valve
- 2 x NTC temperature probe
- siphoned condensate drains
- exposition: zinc-plated steel, powder coated in white (RAL 9003)
- worktop: linen stainless steel
- LEDit lighting (optionally)
- expositions full base
- without sidewalls (optionally)

Lhotse LDLH-47 2500 GCL



**Cross sections:**



**GCL** – glass | single, bent | lift up

**BCA** – low glass or front glass riser | single, bent | fixed

<b>Available modules:</b>	<b>BCA</b>	1250	1875	2150	2500	3750	
	<b>GCL</b>	0938	1250	1875	2150	2500	3750
	<b>BCA GCL</b>	NW45	NW90	NZ45	NZ90		